

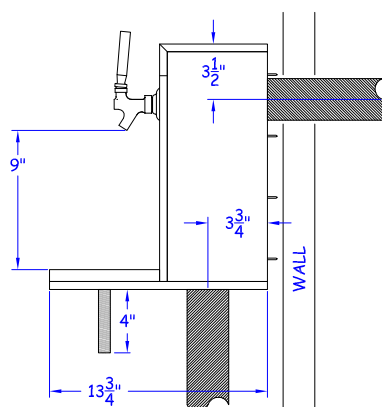
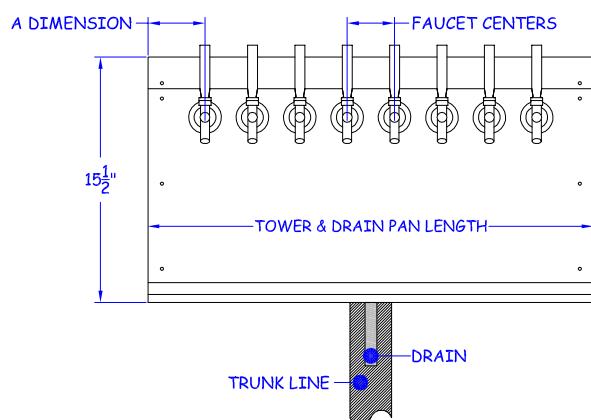
WALL MOUNT TOWER & DRAIN PAN SIZES & SPECIFICATIONS

PROJECT _____

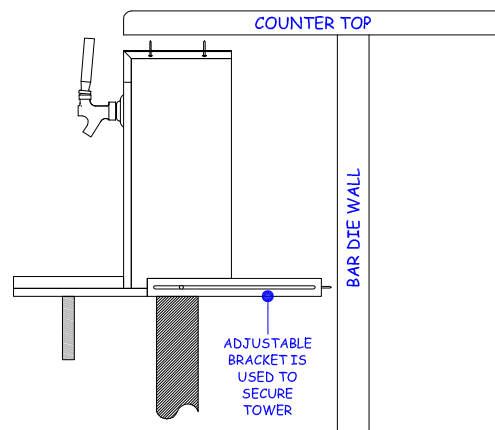
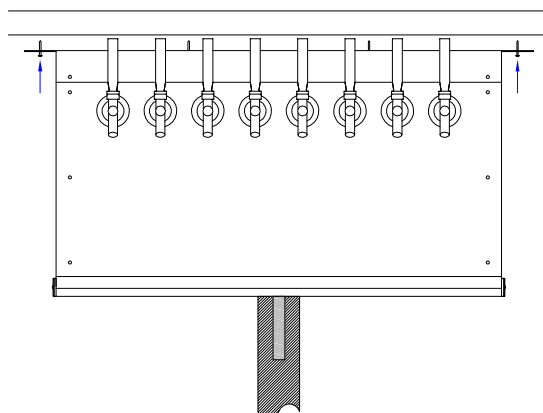
ITEM # _____

	SMALL		MEDIUM		LARGE			X-LARGE			
NUMBER OF FAUCETS	2	3	4	5	6	7	8	9	10	11	12
TOWER & DRAIN PAN LENGTH	12"		18-7/8"		28-1/8"			37-1/2"			
A DIMENSION	4"	3"	3-7/16"		4-1/2"			3-1/2"			
FAUCET CENTERS	4"	3"	3-7/8"	3"	3-13/16"	3-3/16"	2-3/4"	3-13/16"	3-3/8"	3"	2-3/4"
TOWER NOMENCLATURE: <div style="text-align: center; font-size: 1.5em; font-weight: bold;">WM-8-LED</div> <div style="display: flex; justify-content: space-around; margin-top: 10px;"> <div style="text-align: center;">TYPE OF TOWER</div> <div style="text-align: center;">NUMBER OF FAUCETS</div> <div style="text-align: center;">OPTIONAL LED DISPLAY</div> </div>					<div style="color: red; text-align: center; font-weight: bold;">STAINLESS STEEL IS THE ONLY FINISH AVAILABLE</div> <div style="text-align: center; font-weight: bold; margin-top: 10px;">ADDITIONAL OPTIONS:</div> <div style="text-align: center; margin-top: 10px;">LED TEMPERATURE DISPLAY GLASS RINSER FAUCET LOCKS</div>						

STANDARD WALL MOUNT TOWER:



OPTIONAL UNDER COUNTER MOUNT TOWER:



2371 GAUSE BLVD. WEST
SLIDELL, LA 70460
P.O. BOX 5566 - ZIP 70469



www.CHILLRITE32.com
800.256.2190 - TOLL FREE
985.641.0183 - FAX