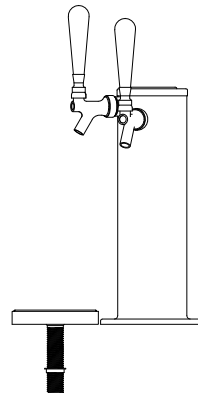
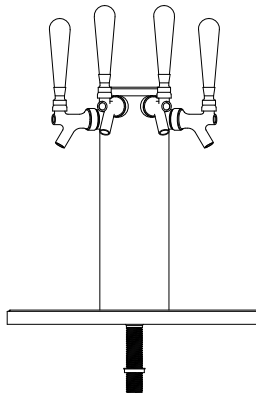
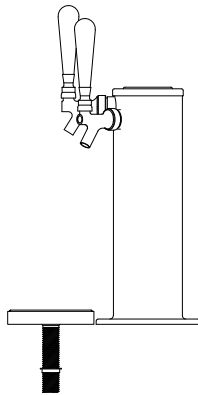
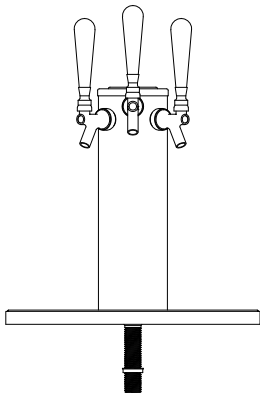
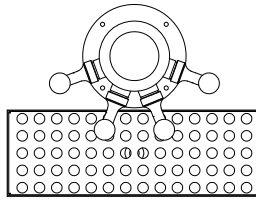
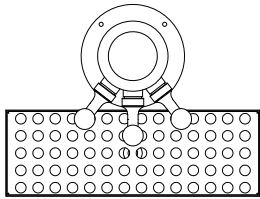
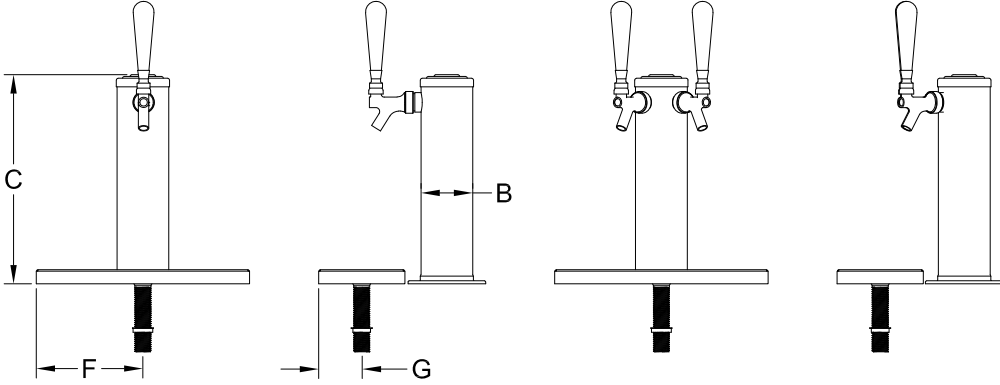
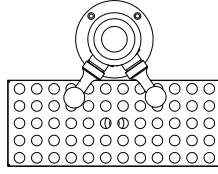
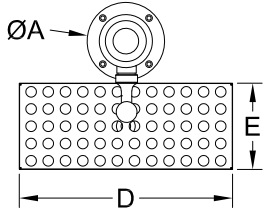


COLUMN

COUNTER MOUNT TOWER

PROJECT NAME: _____ ITEM #: _____

APPROVED BY: _____ DATE: _____



TOWER NOMENCLATURE:

CT3 - 1F - C

STYLE OF TOWER
NUMBER OF FAUCETS
TOWER FINISH

LEGEND: C = CHROME PVDB = PVD BRASS
PC = POWDER COATED

INCLUDED HARDWARE: 2" WOOD SCREWS & 10-24 4" SCREWS
TOWER MADE OF 304 STAINLESS STEEL

DISCLAIMERS:
• CHILL RITE RESERVES THE RIGHT TO CHANGE MEASUREMENTS WITHOUT NOTICE.
• THIS DRAWING IS THE SOLE PROPERTY OF CHILL RITE MANUFACTURING AND SHOULD NOT BE USED OR RECREATED WITHOUT WRITTEN CONSENT FROM CHILL RITE.
• TAP HANDLES NOT INCLUDED.
• COLORATION IS A DIGITAL REPRESENTATION AND DOES NOT REFLECT THE ACTUAL COLOR.



• PLEASE CHOOSE NUMBER OF FAUCETS BELOW •

| FAUCETS | STYLE | A | B | C | D | E | F | G |
|---------|-------|-----|---|--------|--------|---|--------|-----|
| 1 | CT3 | 4.5 | 3 | 12.125 | 12.375 | 5 | 6.1875 | 2.5 |
| 2 | CT3 | 4.5 | 3 | 12.125 | 12.375 | 5 | 6.1875 | 2.5 |
| 3 | CT4 | 6 | 4 | 13.75 | 14.75 | 5 | 7.375 | 2.5 |
| 4 | CT4 | 6 | 4 | 13.75 | 14.75 | 5 | 7.375 | 2.5 |

• PLEASE CHOOSE ONE TOWER FINISH •

- CHROME-C PVD BRASS-PVD BRASS
 POWDER COATED-PC RAL #

ALL MEASUREMENTS ARE IN INCHES AND WEIGHTS IN POUNDS UNLESS OTHERWISE NOTED

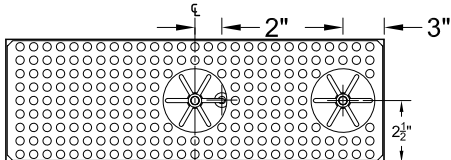
• PLEASE CHOOSE ONE DRIP PAN FINISH • RECTANGLE PANS ONLY •

- #8 MIRROR-MF #4 BRUSHED-SS

• IF GLASS RINSER IS REQUIRED PLEASE CHOOSE LOCATION •

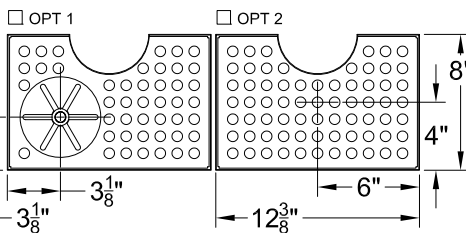
STANDARD DRIP PAN WITH RINSER

CENTER or OFFSET



OPTIONAL RADIUS DRIP PAN • #4 BRUSHED FINISH ONLY •

RADIUS DRIP PANS FOR 1 & 2 FAUCET COLUMN TOWER



RADIUS DRIP PANS FOR 3 & 4 FAUCET COLUMN TOWER

