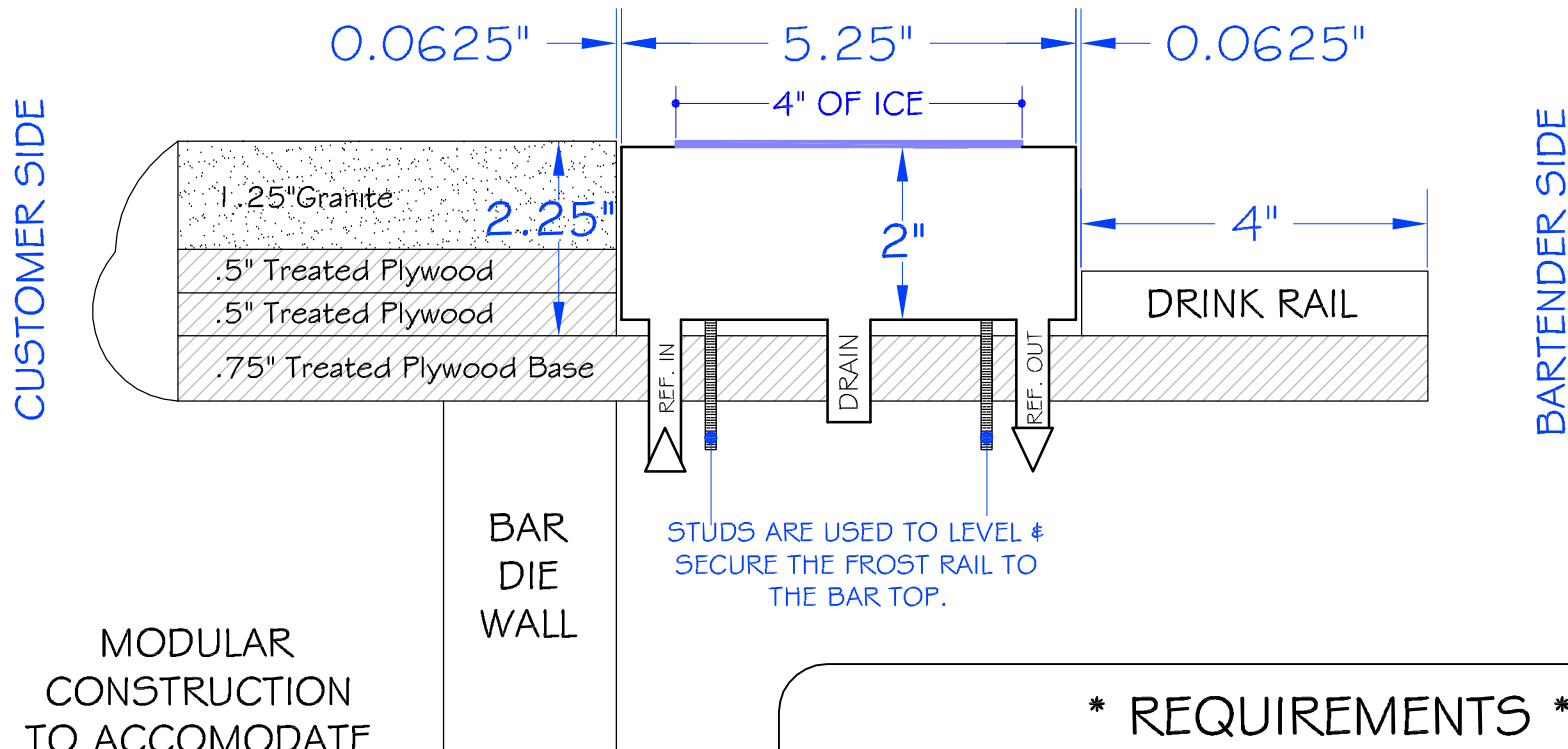


** FROST RAIL DETAIL & SPECIFICATIONS **

THE FROST RAIL IS PLACED ON TOP OF BAR FIRST, THEN THE COUNTERTOP IS BUILT UP TO THE TOP OF THE FROST RAIL.

SAMPLE DRAWING:



MODULAR
CONSTRUCTION
TO ACCOMODATE
VARIOUS SIZES

* REQUIREMENTS *

- ◆ DRINK RAIL NEEDS TO BE PLACED ON BARTENDER SIDE OF BAR... **NOT CUSTOMER SIDE !!**
- ◆ MINIMUM OF 12.125" OVERHANG BETWEEN BAR DIE WALL & DRINK RAIL EDGE
- ◆ BAR TOP MUST BE MINIMUM OF 2.25" IN THICKNESS
- ◆ 1/2" REFRIGERATION LINES WILL NEED TO BE ROUTED UNDER BAR TO A REMOTE REFRIGERATION UNIT TO BE LOCATED IN VICINITY OF BAR. THE UNIT SHOULD BE WALL HUNG. A 230v - 20AMP DEDICATED CIRCUIT IS REQUIRED WITHIN 4' FROM UNIT.
- ◆ THE UNDER BAR AREA MUST BE ACCESSIBLE FOR REFRIGERATION LINES, DRAIN LINES, & EXPANSION VALVES. MINIMUM 6" UNDER BAR REQUIRED FOR REFRIGERATION CONNECTIONS.
- ◆ PROPER VENTILATION IS REQUIRED FOR REMOTE UNIT
- ◆ SIGNED DRAWING REQUIRED BEFORE MANUFACTURING CAN BEGIN

CHILL·BITE
32[®]
Beer Systems

800.256.2190
985.641.0183 FAX

www.CHILLRITE32.com

